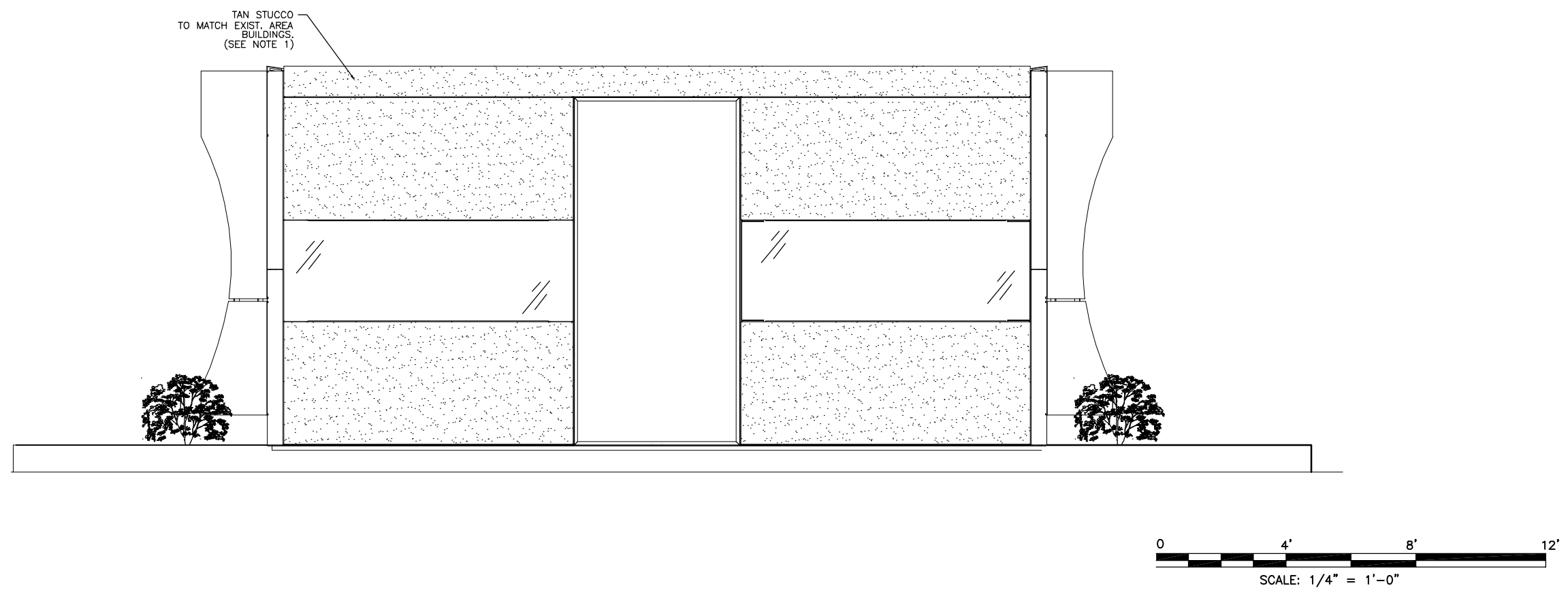


1 WEST ELEVATION (LOOKING EAST) 1/4" = 1'-0"



3 EAST ELEVATION (LOOKING WEST) 1/4" = 1'-0"

Issue History:		
No:	Date:	Description:
A	3/27/2002	PRELIM. ZONING
B	4/4/2002	ISSUED FOR ZONING



Millennium Venture Group

Project

VILLAGER SQUARE
6570 W. 120TH AVE.
BROOMFIELD, COLORADO

Site No: **459**

Sheet Title:
ELEVATIONS

Date: **3/27/2002**

Designed By: **JAK**

Drawn By: **MPR**

Project #: **2002-30**

Sheet Number: