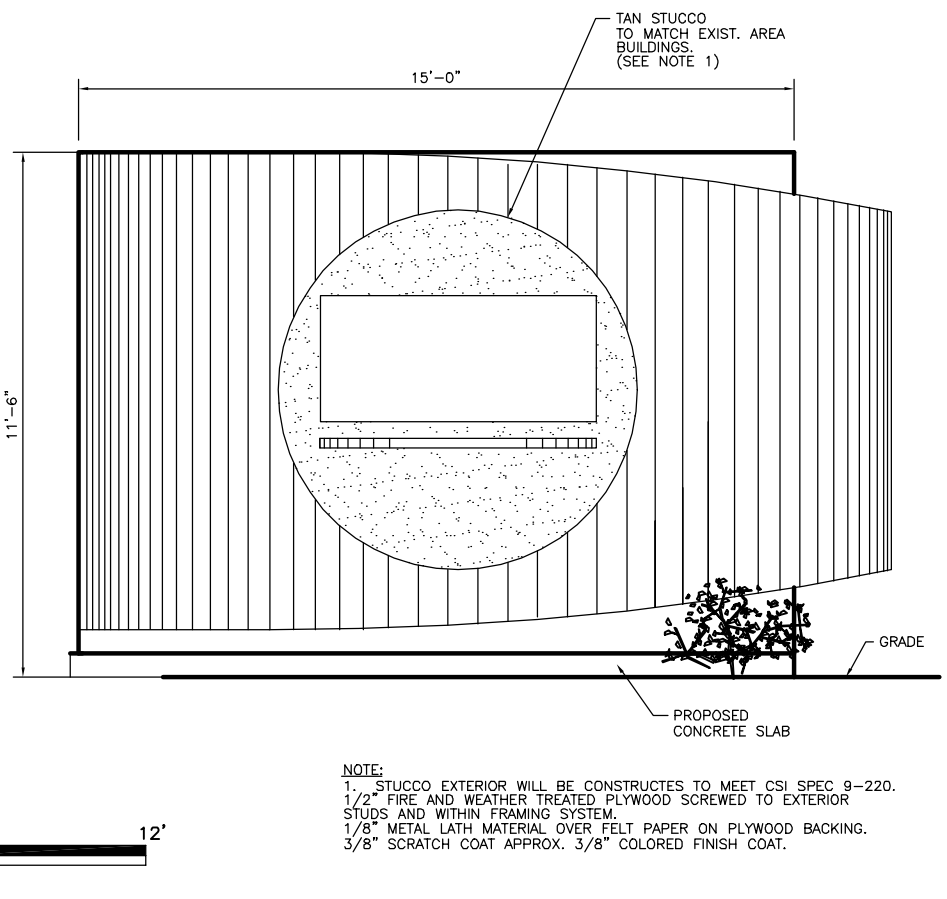
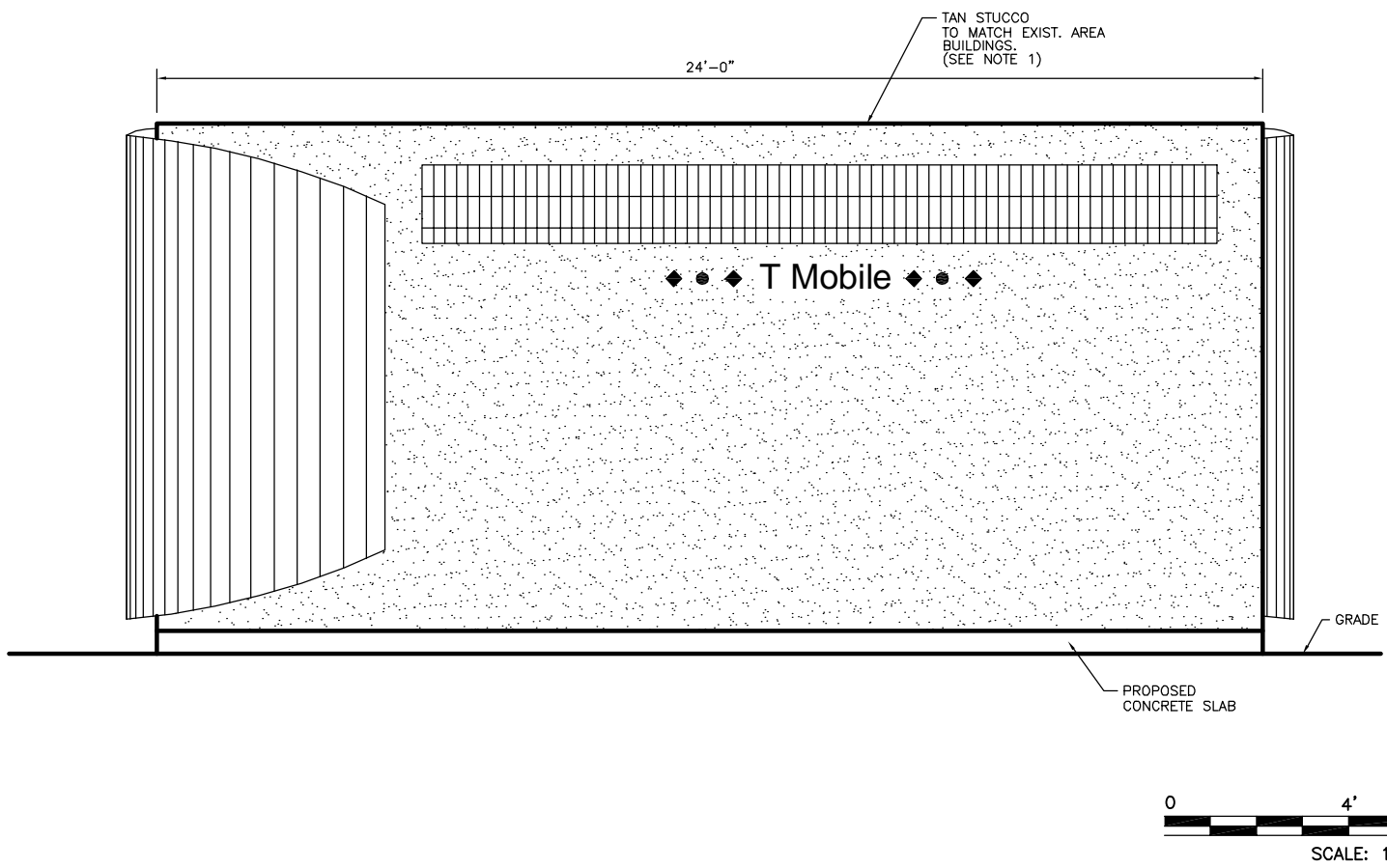


1 SOUTH ELEVATION (LOOKING NORTH) 1/4" = 1'-0"

2 EAST ELEVATION (LOOKING WEST) 1/4" = 1'-0"



3 NORTH ELEVATION (LOOKING SOUTH) 1/4" = 1'-0"

4 WEST ELEVATION (LOOKING EAST) 1/4" = 1'-0"

NOTE:
 1. STUCCO EXTERIOR WILL BE CONSTRUCTED TO MEET CSI SPEC 9-220.
 1/2" FIRE AND WEATHER TREATED PLYWOOD SCREWED TO EXTERIOR STUDS AND WITHIN FRAMING SYSTEM.
 1/8" METAL LATH MATERIAL OVER FELT PAPER ON PLYWOOD BACKING.
 3/8" SCRATCH COAT APPROX. 3/8" COLORED FINISH COAT.

Issue History:

No:	Date:	Description:
A	3/7/2002	PRELIM. ZONING
B	3/19/2002	ZONING



Project: Millennium Venture Group
 WESTVIEW PLAZA
 1750 N. MAIN
 LONGMONT, COLORADO

Site No: 451

Sheet Title: ELEVATIONS

Date: 3/19/2002
 Designed By: JAK
 Drawn By: MPR
 Project #: 2002-22
 Sheet Number: