

Issue History:		
No:	Date:	Description:
A	3/7/2002	PRELIM. ZONING
B	3/19/2002	ZONING



Millennium Venture Group

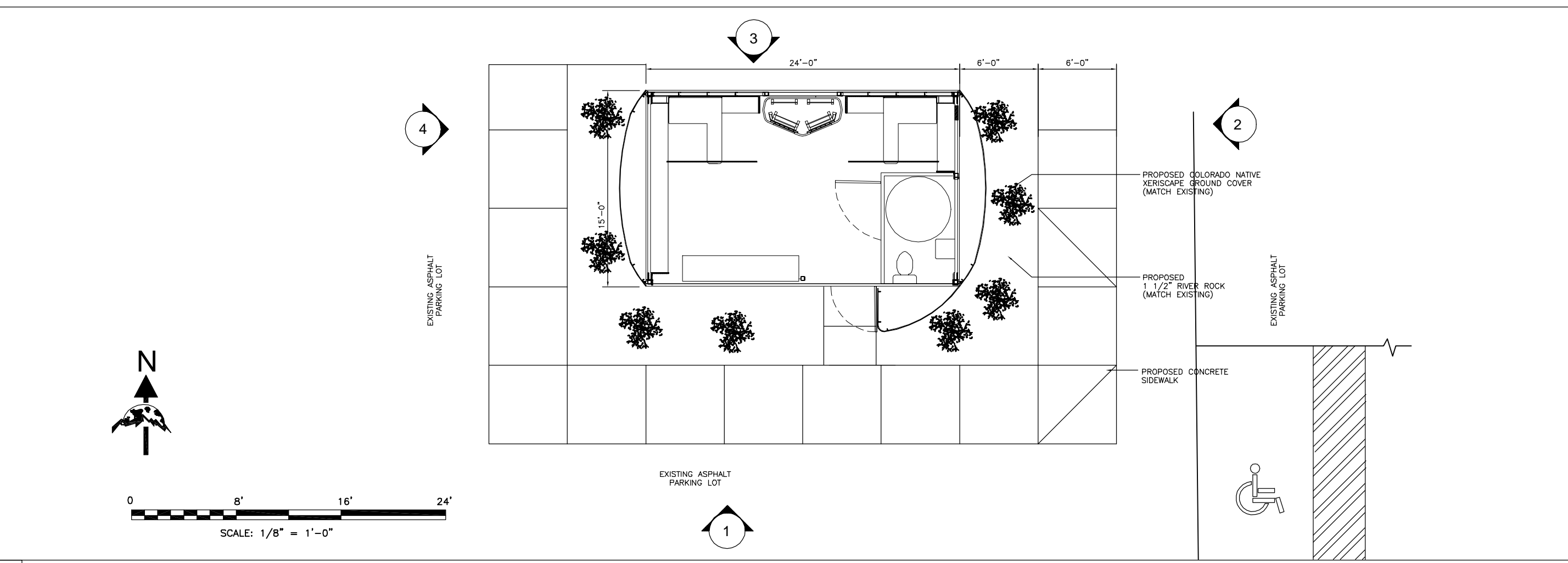
WESTVIEW PLAZA
1750 N. MAIN
LONGMONT, COLORADO

Site No: 451

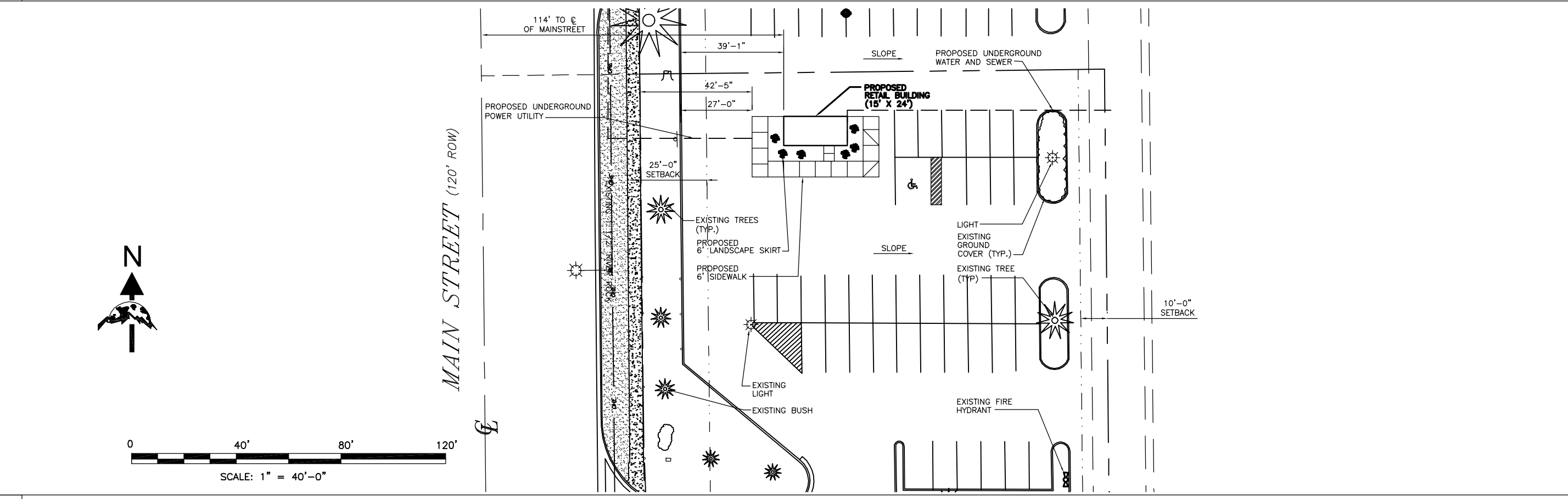
Sheet Title:
ENLARGED SITE PLAN / FLOOR PLAN

Date: 3/19/2002
Designed By: JAK
Drawn By: MPR
Project #: 2002-22
Sheet Number:

Z3



2 FLOOR PLAN 1/8" = 1'-0"



1 ENLARGED SITE PLAN 1" = 40'