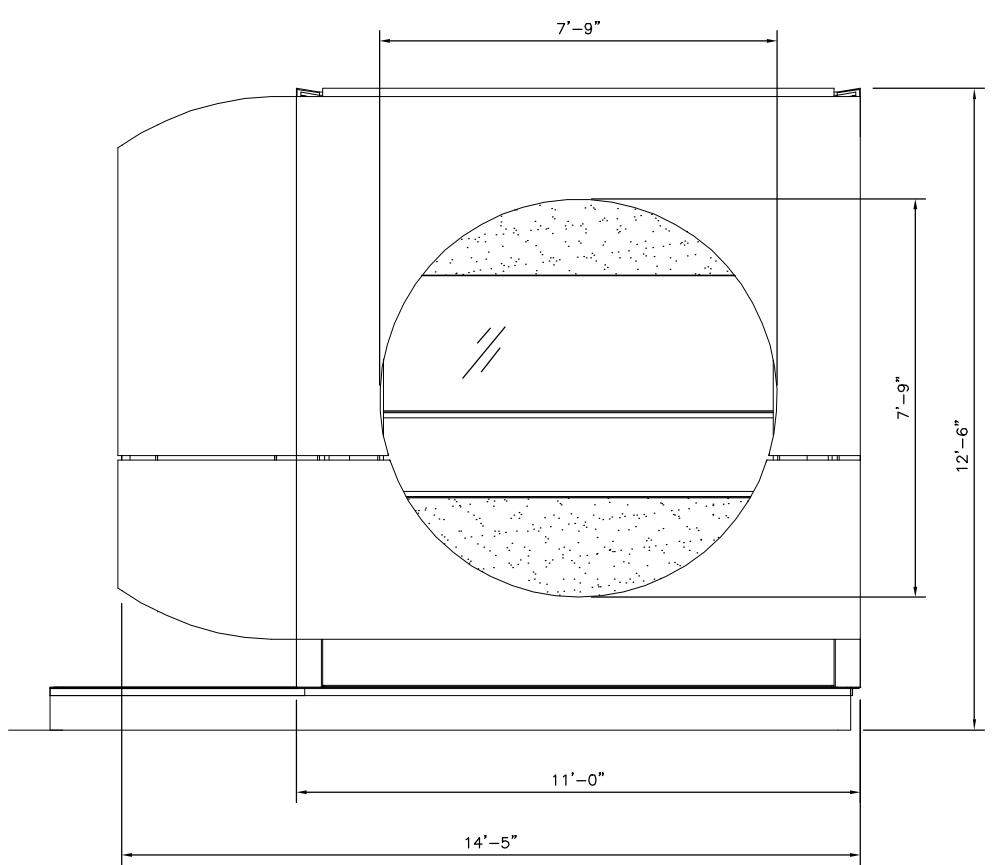
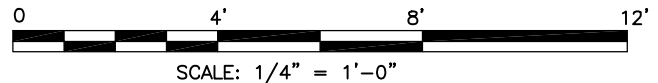
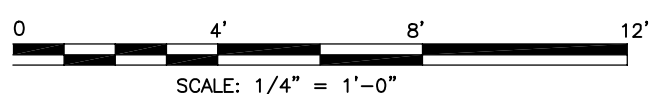
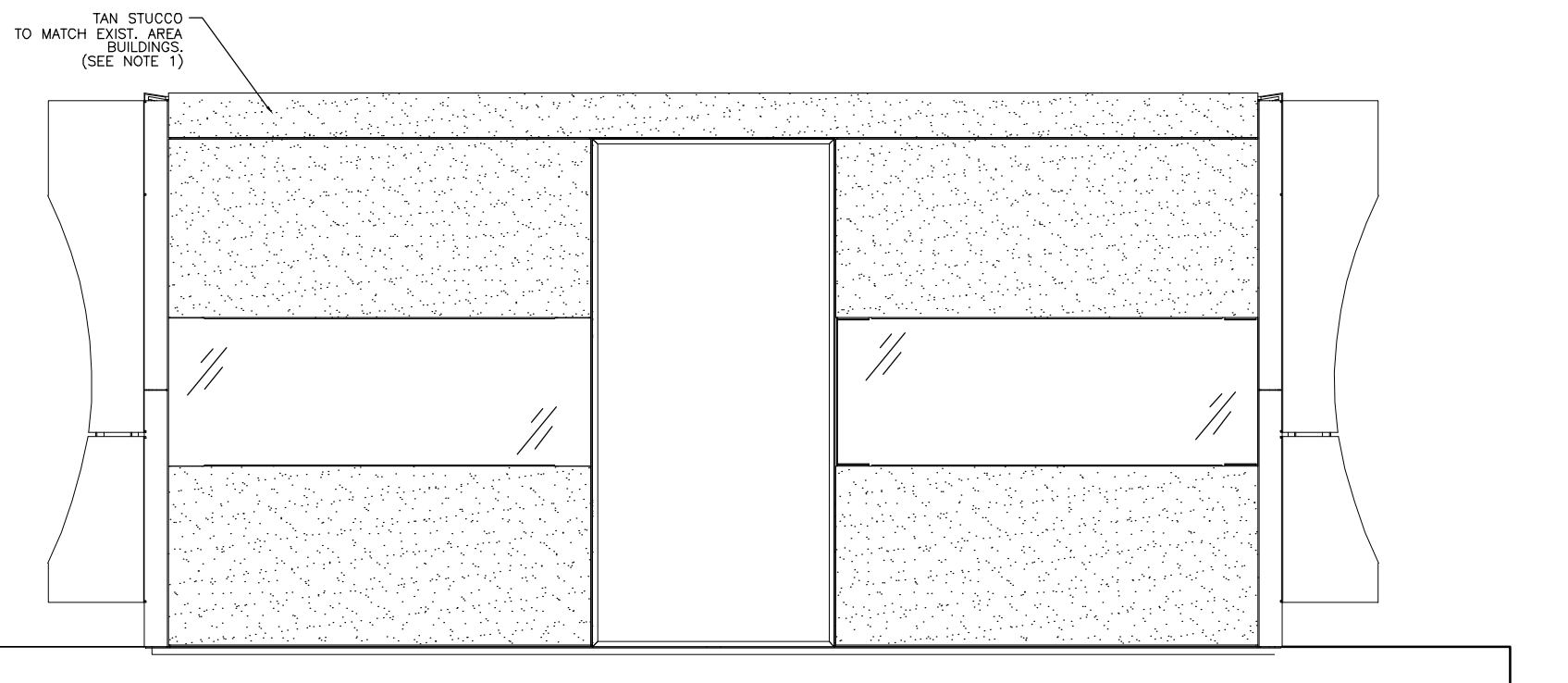


NOTE:
 1. STUCCO EXTERIOR WILL BE CONSTRUCTED TO MEET CSI SPEC 9-220.
 1/2" FIRE AND WEATHER TREATED PLYWOOD SCREWED TO EXTERIOR STUDS AND WITHIN FRAMING SYSTEM.
 1/8" METAL LATH MATERIAL OVER FELT PAPER ON PLYWOOD BACKING.
 3/8" SCRATCH COAT APPROX. 3/8" COLORED FINISH COAT.

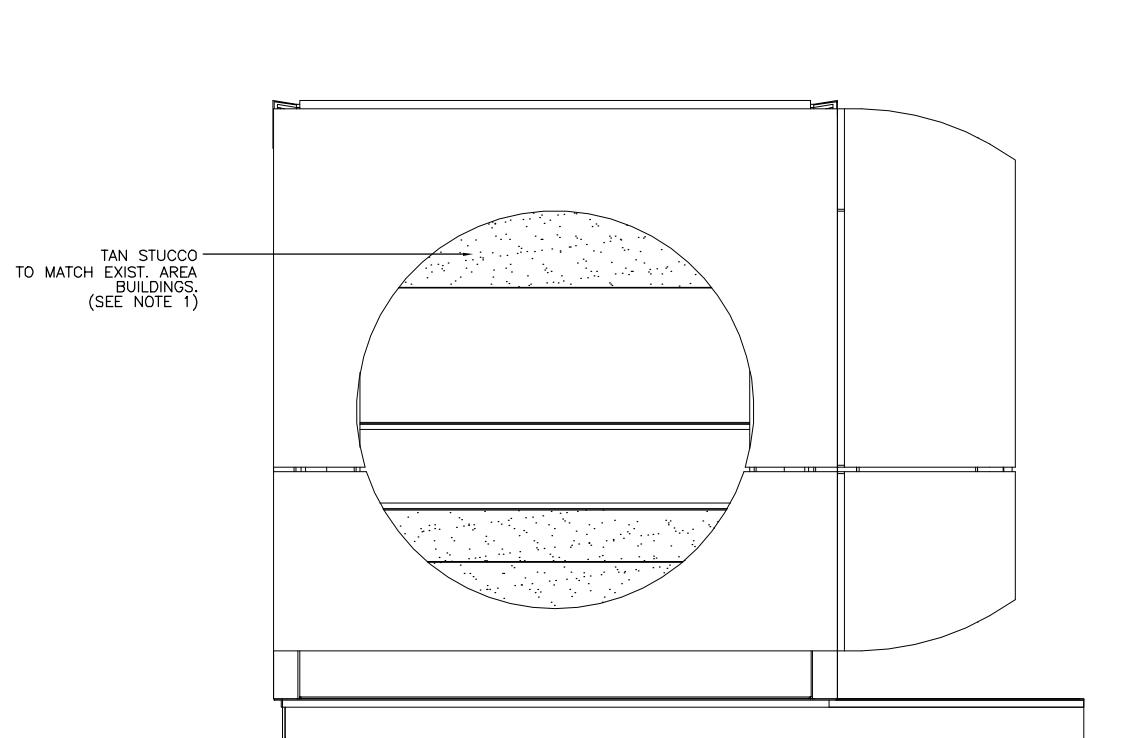


1 SOUTH ELEVATION (LOOKING NORTH) 1/4" = 1'-0"

2 EAST ELEVATION (LOOKING WEST) 1/4" = 1'-0"



3 NORTH ELEVATION (LOOKING SOUTH) 1/4" = 1'-0"



4 WEST ELEVATION (LOOKING EAST) 1/4" = 1'-0"

Issue History:		
No.	Date	Description
A	4/1/2002	PRELIM. ZONING



Millennium Venture Group
 UNIVERSITY TOWN CENTER
 7450 S. UNIVERSITY BLVD.
 CENTENNIAL, COLORADO 80012

Project
 Site No: 275
 Sheet Title:
 ELEVATIONS

Date: 4/1/2002
 Designed By: JAK
 Drawn By: MPR
 Project #: 2002-33
 Sheet Number: